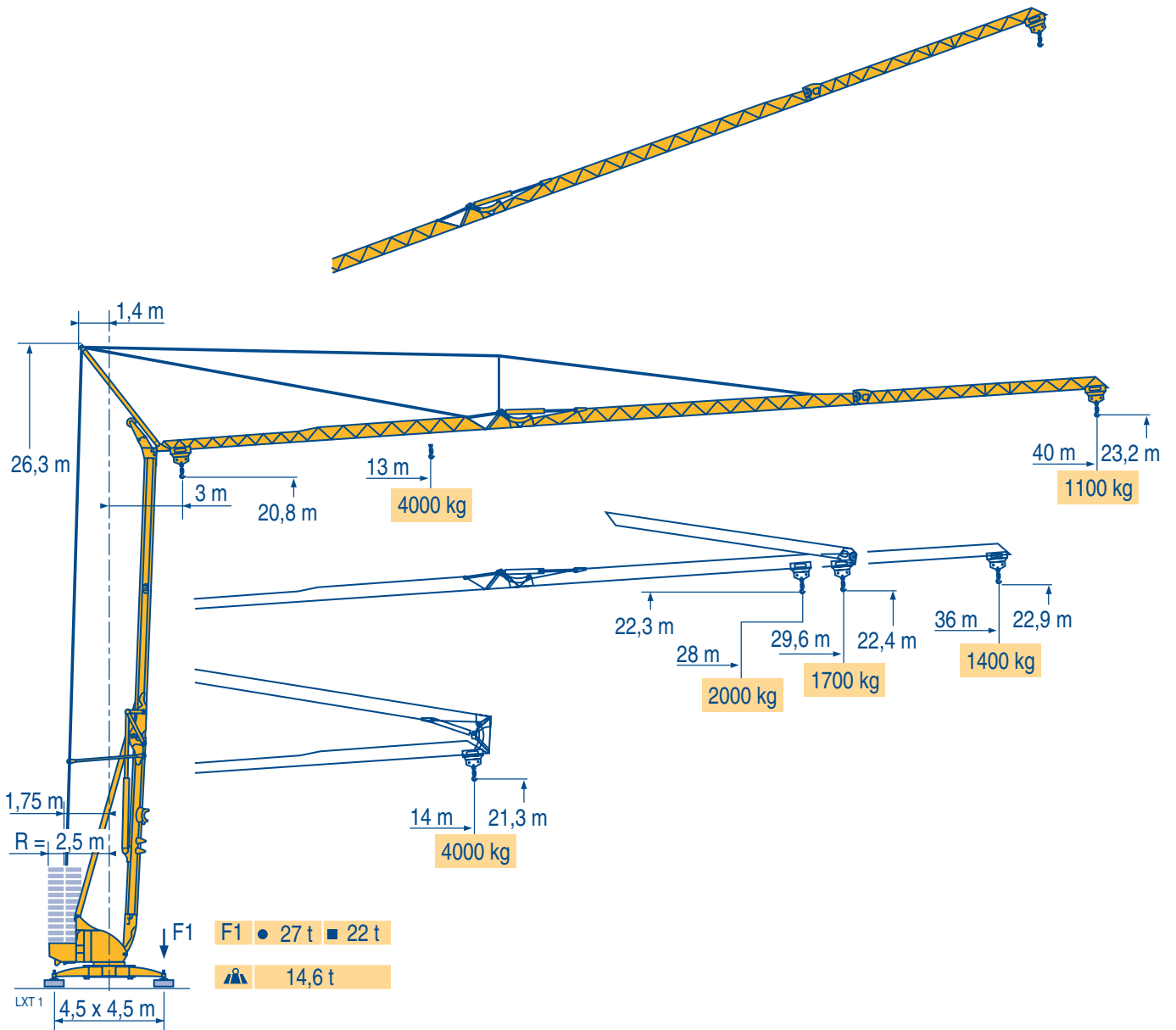


POTAIN

Igo 50



Courbes de charges

Lastkurven

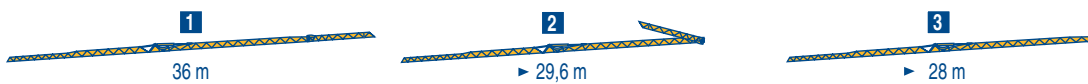
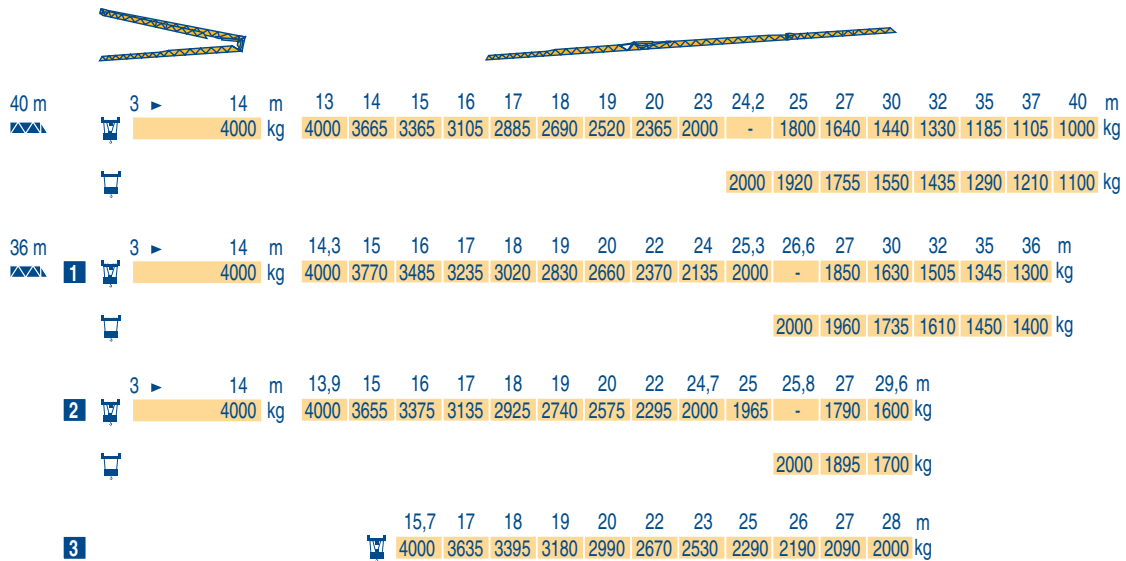
Load diagrams

Curvas de cargas

Curve di carico

Curva de cargas

LXT 1



Flèche relevée

Ausleger in Steilstellung

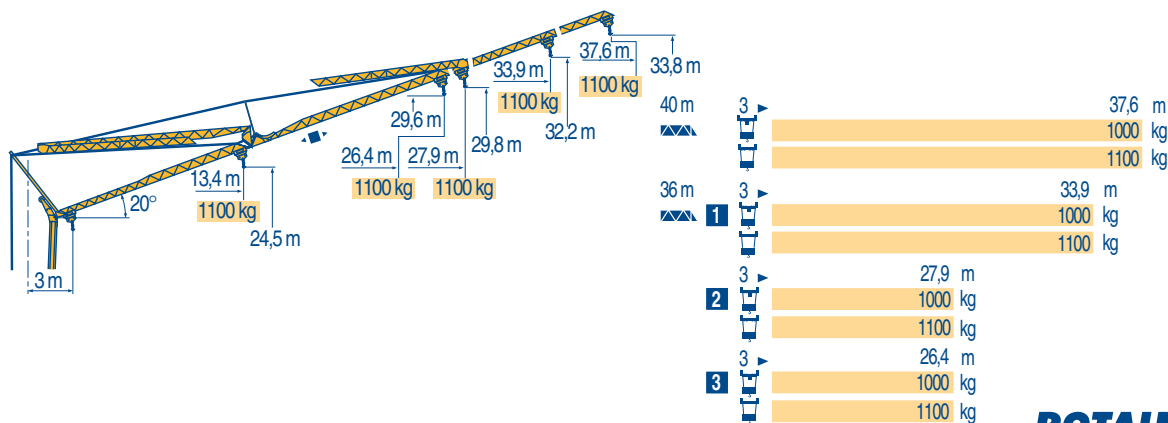
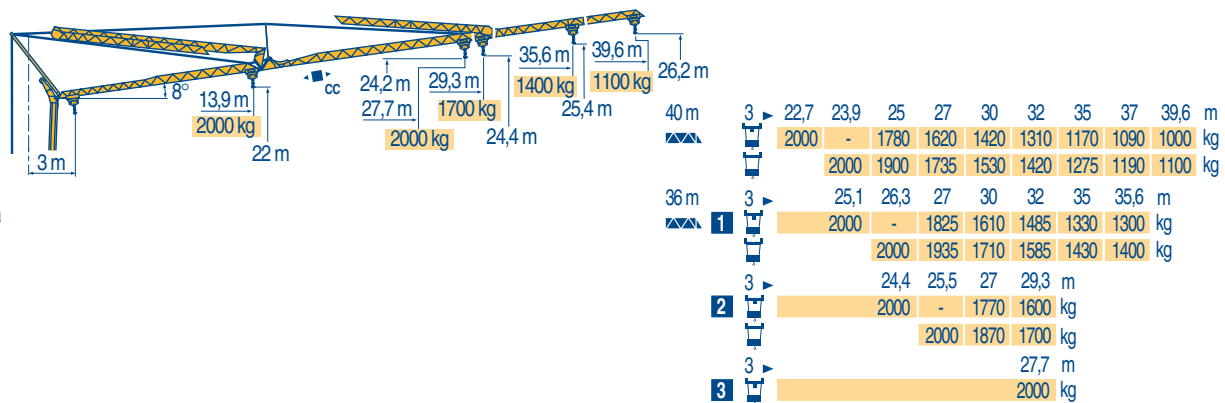
Luffing jib

Flecha izada

Braccio impennato

Lança inclinada

LXT 1



Igo 50



- F** Chariot distributeur
- CC** Chariot distributeur et courbes de charges
- Réactions en service
- Réactions hors service
- ▲ A vide sans lest (ni train de transport) avec flèche et hauteur maximum.

- D** Verfahrbare Laufkatze
- Verfahrbare Laufkatze und Lastkurven
- Reaktionskräfte in Betrieb
- Reaktionskräfte außer Betrieb
- Ohne Last, Ballast (und Transportachse), mit Maximalausleger und Maximalhöhe.

- GB** Traversing trolley
- Traversing trolley and load diagrams
- Reactions in service
- Reactions out of service
- Without load, ballast (or transport axes), with maximum jib and maximum height.

- E** Carro distribuidor
- Carro distribuidor y curvas de cargas
- Reacciones en servicio
- Reacciones fuera de servicio
- Sin carga, sin lastre, (ni tren de transporte), flecha y altura máxima.

- I** Carrellino distributore
- Carrellino distributore e curve di carico
- Reazioni in servizio
- Reazioni fuori servizio
- A vuoto, senza zavorra (ne assali di trasporto) con braccio massimo e altezza massima.

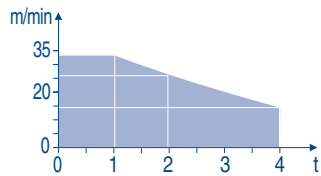
- P** Carro distribuidor
- Carro distribuidor e curva de cargas
- Reações em serviço
- Reações fora de serviço
- Sem carga (nem trem de transporte)- sem lastro com lança e altura máximas.

Mécanismes
Antriebe
Mechanisms
Mecanismos
Meccanismi
Mecanismos

LXT 1

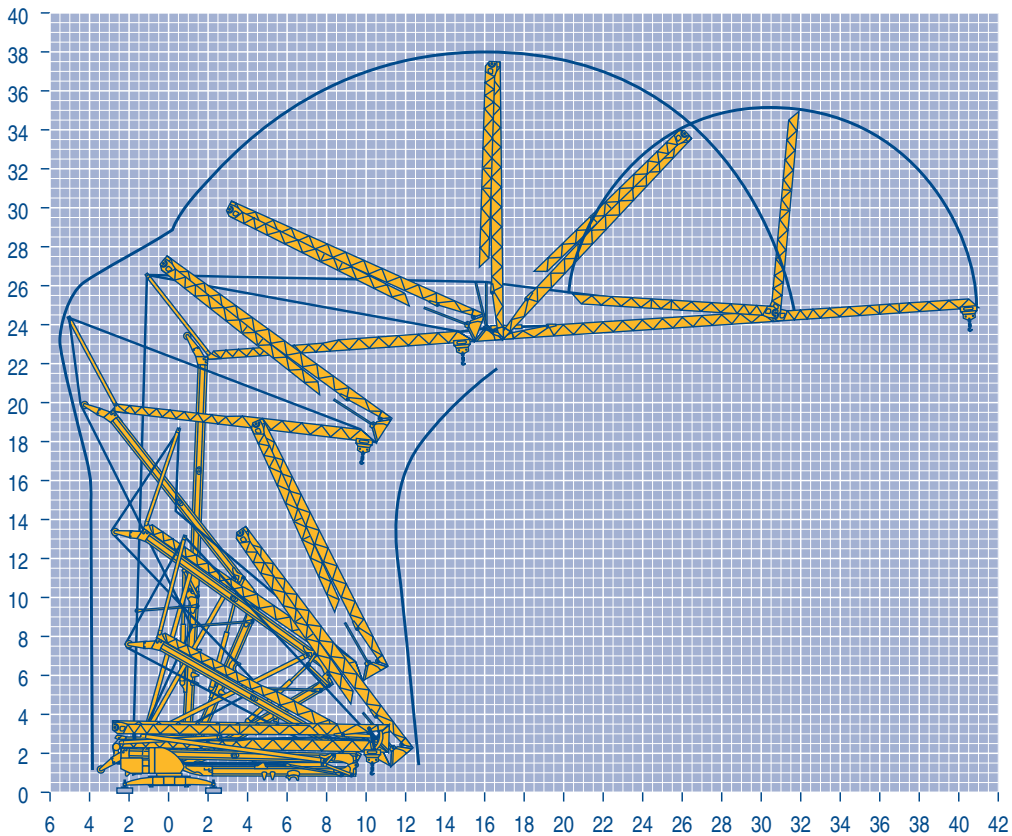
		🏗️					🏗️					ch - PS hp	kW	
⬆️ ⬆️	15 LVF 10 Optima	m/min	3,6	18	30	49	66						15	11
		kg	2000	2000	2000	1100	500							
		m/min	3,6	18	30	54	66	1,8	8,9	15	27	33		
		kg	2000	2000	2000	1000	500	4000	4000	4000	2000	1000		
◀️▶️	3 DVF5	m/min	19 - 41									3	2,2	
🔄	RVF+ 51	tr/min U/min rpm	0 → 0,8									5,5	4	
CEI 38		🔌	IEC 38		kVA					🎧				
400 V (+6% -10%) 50 Hz		15 LVF 10 : 22 kVA					2000/14							

15 LVF 10
Optima



Montage
Montage
Erection
Montaje
Montaggio
Montagem

LXT 1



Igo 50

POTAIN

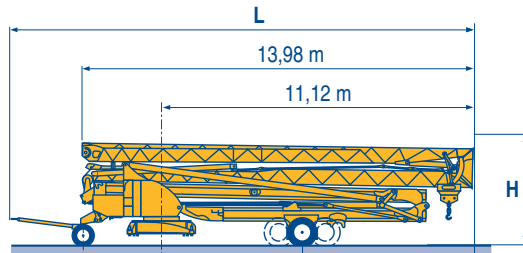


F	D	GB	E	I	P
Levage	Heben	Hoisting	Elevación	Sollevamento	Elevação
Distribution	Katzfahren	Trolleying	Distribución	Distribuzione	Distribuição
Orientation	Schwenken	Slewing	Orientación	Rotazione	Rotação
Conforme aux directives CEE sur le niveau acoustique	Gemäss EWG-Richtlinien für den Schall-Leistungspegel	In compliance with the EEC Instructions on noise level	Conforme con las directivas CEE sobre el nivel acústico	Conforme alle direttive CEE sul livello acustico	Conforme as directivas CEE sobre o nível acústico

- Transport ○
- Transport
- Transport
- Transporte
- Trasporto
- Transporte

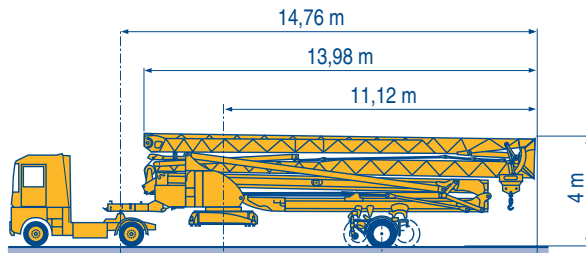
- DJ100/S120 ○
- DJ105/S125
- DJ126M/S125
- DJ126M/S215M

LXT 2



	L			H
DJ100/S120	2,75 m	5,05 m	6,07 m	3,57 m
DJ105/S125	2,75 m	5,05 m	6,07 m	3,57 m
DJ126M/S125	2,75 m	5,05 m	6,06 m	3,57 m
DJ126M/S215M	3,55 m	6,41 m	4,71 m	4 m

- SL122/J215M
- SL121/J135
- SL121/S215M



SL122/J215M	3,65 m	6,41 m	4,7 m
SL121/J135	3,65 m	5,68 m	5,43 m
SL121/S215M	3,65 m	6,41 m	4,7 m

- **F**
Chantier
- D**
Baustelle
- GB**
Site
- E**
Obra
- I**
Cantiere
- P**
Estaleiro



Document commercial non contractuel. Pour toute information technique se référer à la notice correspondante

Unverbindliches Vertriebsdokument. Für technische Informationen, siehe die entsprechenden Anweisungen.

This commercial document is not legally binding. For any technical information, please refer to the corresponding instructions.

Documento commercial non contractuel. Para cualquier información técnica, ver la noticia correspondiente.

Documento commerciale non vincolante, per tutte le informazioni tecniche fare riferimento al catalogo istruzioni

Documento comercial não contratual. Para qualquer informação técnica complementar consultar as respectivas instruções



Americas
Tel: +1 920 683 6322
Tel: +1 717 597 8121

Europe - Middle East - Africa
Tel: +(33) 4 72 81 50 00
Tel: +(44) 191 565 6281

Asia - Pacific
Tel: +(65) 6861 7133
Fax: +(65) 6862 4142

www.manitowoccrane.com

18, rue de Charbonnières - B.P.173
69132 ECULLY Cedex - France

Tél. : (33) 4 72 18 20 20
Fax. : (33) 4 72 18 20 00
www.manitowoccrane.com www.potain.com

Igo 50

Réf. 2003 48 LXT 2

Copyright.Reproduction interdite © POTAIN 2003

Réalisation HeadLines