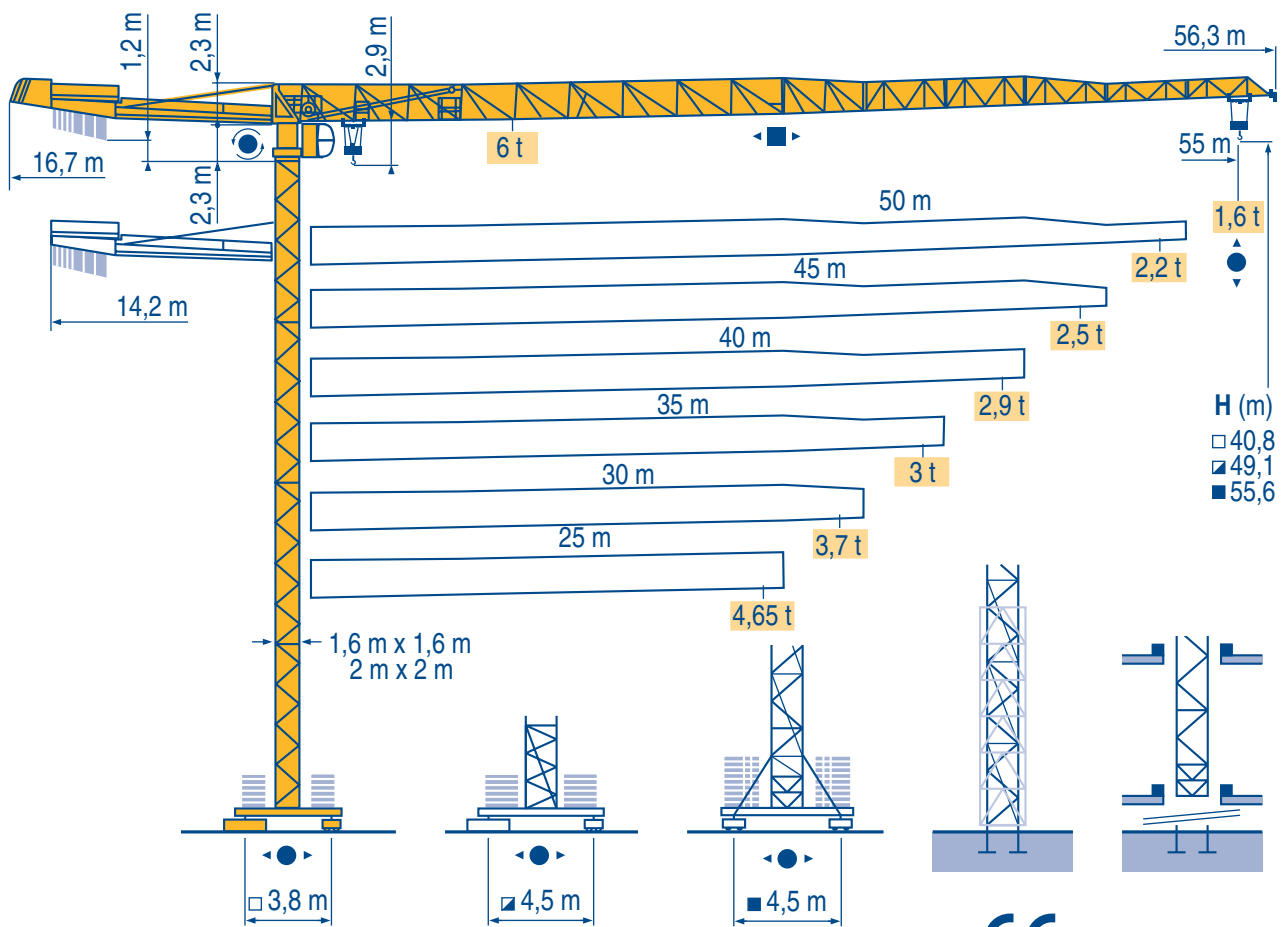


Topless MDT 128



LWZ 1

CE FEM 1.001-A3

- Igo HD
Igo M
HDM
- HDT
- GTMR
- CITY CRANE
- TOPKIT MD
MAXI MD
- MAXI TOPKIT
- Topless MDT
- MR



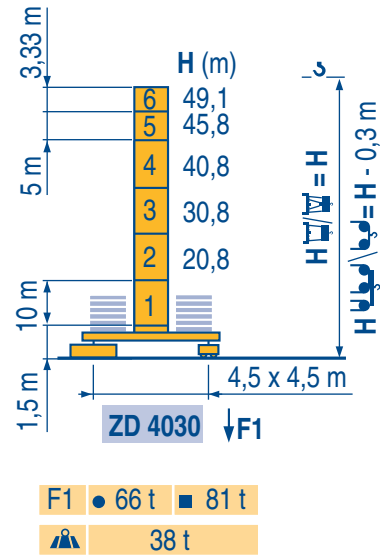
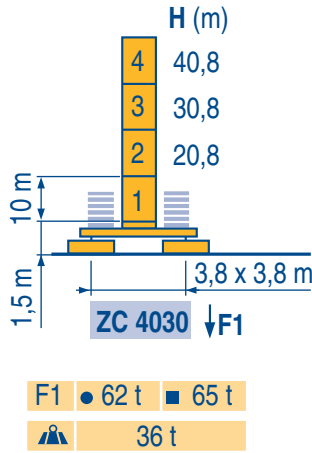
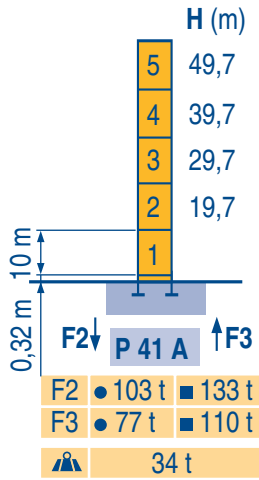
Mat / Réactions
Maste / Eckdrücke
City 1,6 m



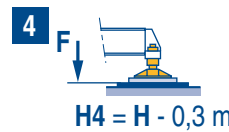
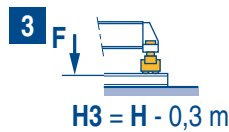
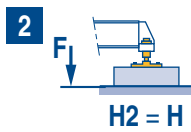
Masts / Reactions
Mástil / Reacciones
City 1,6 m



Torre / Reazioni
Tramo/Reações
City 1,6 m



ZC 4030 - ZD4030



LWZ 1

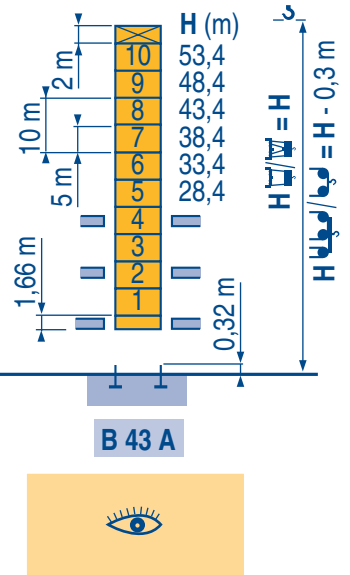
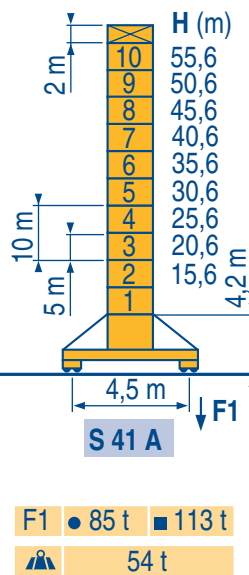
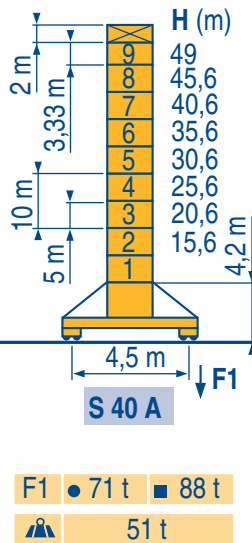
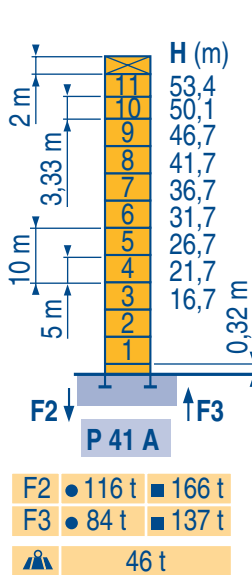
Télescopable 1,6 m
Teleskopierbar 1,6 m



Telescopico 1,6 m
Telescopico 1,6 m

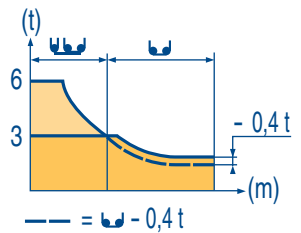


Telescopico 1,6 m
Telescopagem 1,6 m

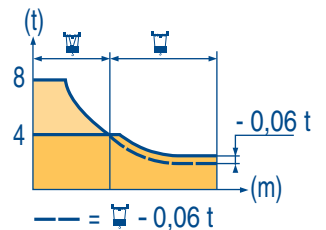


LWZ 1

55 m	3,1	▶	17,3	20	22	25	27	30,1	33	35	37	40	42	45	47	50	52	55 m
▲▲▲			6	5	4,5	3,8	3,5	3	3	2,8	2,6	2,4	2,25	2,05	1,95	1,8	1,7	1,6 t
50 m	3,1	▶	20	22	25	27	30	33	35,1	38,7	40	42	45	47	50 m			
▲▲▲			6	5,4	4,6	4,2	3,7	3,2	3	3	2,9	2,7	2,5	2,35	2,2 t			
45 m	3,1	▶	20	22	25	27	30	33	35	38,7	40	42	45 m					
▲▲▲			6	5,4	4,6	4,2	3,7	3,2	3	3	2,9	2,7	2,5 t					
40 m	3,1	▶	20	22	25	27	30	33	35,2	38,9	40 m							
▲▲▲			6	5,4	4,6	4,2	3,7	3,2	3	3	2,9 t							
35 m	3,1	▶	20	22	25	27	30	33	35 m									
▲▲▲			6	5,4	4,6	4,2	3,7	3,2	3 t									
30 m	3,1	▶	20,2	22	25	27	30 m											
▲▲▲			6	5,4	4,6	4,2	3,7 t											
25 m	3,1	▶	20,2	22	25 m													
▲▲▲			6	5,4	4,65 t													



55 m	2,4	▶	17,5	20	22	25	27	30	31,2	31,7	35	37	40	42	45	47	50	52	55 m
▲▲▲			6	5,1	4,6	4	3,6	3,2	3	3	2,65	2,45	2,25	2,1	1,9	1,8	1,65	1,55	1,45 t
50 m	2,4	▶	20,4	22	25	27	30	32	35	36,5	37	40	42	45	47	50 m			
▲▲▲			6	5,5	4,7	4,3	3,8	3,5	3,2	3	3	2,7	2,55	2,35	2,2	2,05 t			
45 m	2,4	▶	20,4	22	25	27	30	32	35	36,5	37	40	42	45 m					
▲▲▲			6	5,5	4,7	4,3	3,8	3,5	3,2	3	3	2,7	2,55	2,35 t					
40 m	2,4	▶	20,4	22	25	27	30	32	35	36,5	37	40 m							
▲▲▲			6	5,5	4,7	4,3	3,8	3,5	3,2	3	3	2,7 t							
35 m	2,4	▶	20,4	22	25	27	30	32	35 m										
▲▲▲			6	5,5	4,7	4,3	3,8	3,5	3,2 t										
30 m	2,4	▶	20,4	22	25	27	30 m												
▲▲▲			6	5,5	4,7	4,3	3,8 t												
40 m	2,4	▶	20,4	22	25 m														
▲▲▲			6	5,5	4,75 t														



LWZ 1



Voir
téléscopage
sur dalles
● Réactions en service
■ Réactions hors
service
A vide sans lest
(ni train de transport)
avec flèche et
hauteur maximum.



Siehe
Kletterkrane im
Gebäude
● Reaktionskräfte in
Betrieb
■ Reaktionskräfte
außer Betrieb
Ohne Last, Ballast
(und Transportachse),
mit Maximalausleger
und Maximalhöhe.



See climbing
crane
● Reactions in service
■ Reactions out of
service
Without load, ballast
(or transport axles),
with maximum jib and
maximum height.



Vea grua
trepadora
● Reacciones en
servicio
■ Reacciones fuera de
servicio
Sin carga, sin lastre,
(ni tren de
transporte), flecha y
altura máxima.



Consultare
gru in cavedio
● Reazioni in servizio
■ Reazioni fuori servizio
A vuoto, senza zavorra
(ne assali di trasporto)
con braccio massimo
e altezza massima.



Ver
telescopagem sobre
lages
● Reacções em serviço
■ Reacções fora de
serviço
Sem carga (nem trem
de transporte)-
sem lastro com lança
e altura máximas.



Télescopage sur dalles
Kletterkrane im Gebäude



Climbing crane



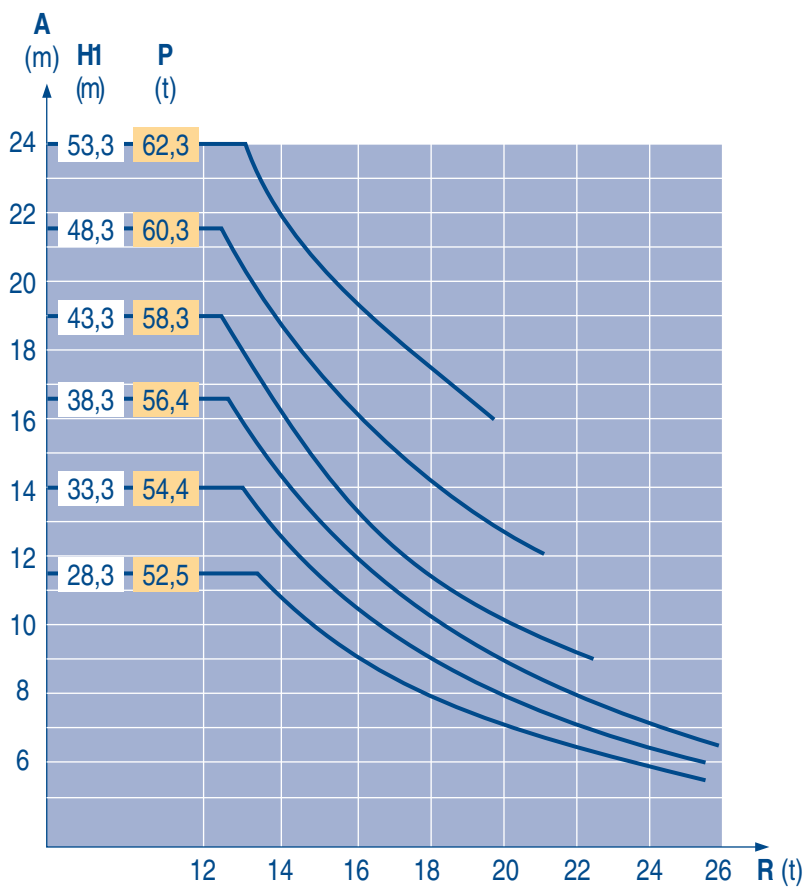
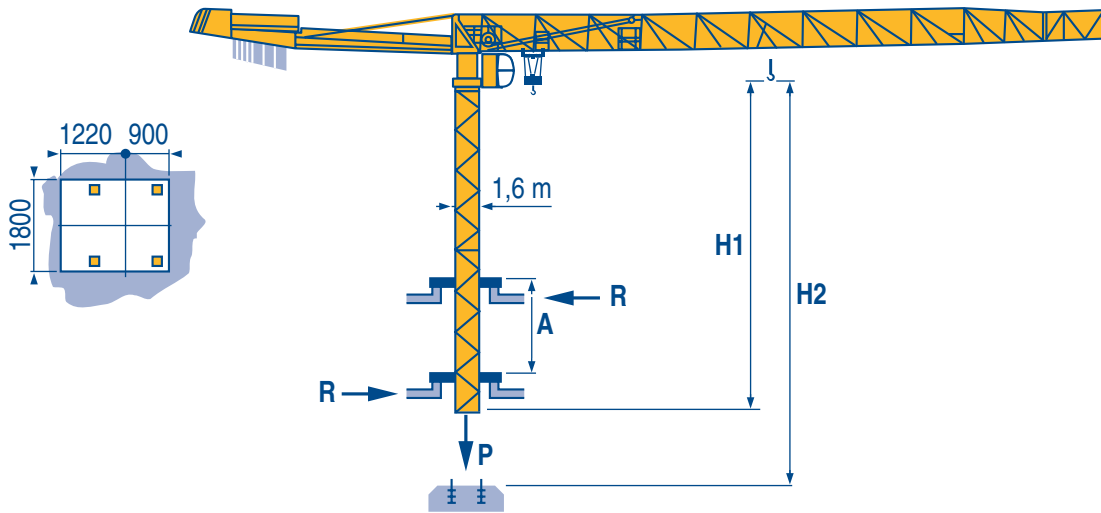
Telescopage gruas trepadoras

Gru in cavedio



Telescopagem sobre lages

B 43 A



LWZ 1

A	Distance entre cadres	F	Abstand zwischen den Rahmen	D	Distance between collars	GB	Distancia entre marcos	E	Distanza fra i telai	I	Distância entre quadros	P
H1	Hauteur grue		Kranhöhe		Crane height		Altura grúa		Altezza gru		Altura da grua	
P	Poids de la grue (en service)		Krangewicht (in Betrieb)		Crane weight (in service)		Peso de la grúa (en servicio)		Peso della gru (in servizio)		Peso da grua (em serviço)	
R	Réaction horizontale		Horizontalkräfte		Horizontal reaction		Reaccion horizontal		Reazione orizzontale		Reacção horizontal	

Lest de contre-flèche
Gegenauslegerballast



Counter-jib ballast
Lastre de contra flecha



Contrappeso
Lastros da contra lança



LWZ 1

1 100 kg - 3 600 kg		
		(kg)
55 m	16,7 m	12 700
50 m	14,2 m	12 700
45 m	14,2 m	11 600
40 m	14,2 m	10 500
35 m	14,2 m	9 400
30 m	14,2 m	9 400
25 m	14,2 m	8 300

Lest de base
Grundballast



Base ballast
Lastre de base













Zavorra di base
Lastros da base

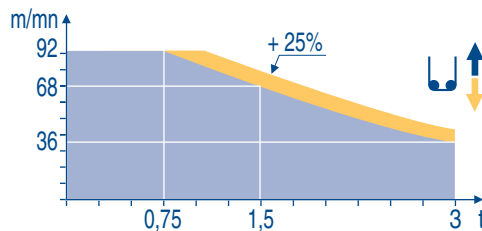


LWZ 1






∅1,6 m	ZC 4030 ◀●▶	H (m)	40,8	30,8	20,8	11,8					
		(t)	70	65	60	55					
∅1,6 m	ZD 4030 ◀●▶	H (m)	49,1	45,8	40,8	35,8	30,8	25,8	20,8	15,8	10,8
		(t)	80	70	70	60	60	45	45	45	45
∅1,6 m	S 40 A ◀●▶	H (m)	49	45,6	40,6	35,6	30,6	25,6	20,6	15,6	
		(t)	84	72	54	42	42	42	36	36	
∅1,6 m	S 41 A ◀●▶	H (m)	55,6	50,6	45,6	40,6	35,6	30,6	25,6	20,6	15,6
		(t)	114	96	72	54	42	42	42	36	36


		L							U					ch - PS hp	kW												
	33 LVF 15 Optima	m/min t	3	→	12	→	36	→	48	→	68	→	92	1,5	→	6	→	18	→	24	→	34	→	46	30	22	260 m >260 
	7 DVF 4	m/min	0 → 79														6,5	4,8									
	RVF 152 Optima +	tr/min U/min rpm	0 → 0,8														2 x 5,5	2 x 4									
ZC 4030 ZD 4030 	RT 324	m/min	25														2 x 4	2 x 2,9									
S 40 A 	RT 324 R ≥ 10 m	m/min	12,5 - 25														2 x 7	2 x 5,2									
S 41 A 	RT 443 A1 2V R ≥ 10 m	m/min	15 - 30														4 x 5	4 x 3,7									
CEI 38 	IEC 38	kVA																									
400 V (+6% -10%) 50 Hz		33 LVF : 50 kVA										2000 / 14															

33 LVF 15 Optima



LWZ 1

	Levage	F	Heben	D	Hoisting	GB	Elevación	E	Sollevamento	I	Elevação	P
	Distribution		Katzfahren		Trolleying		Distribución		Distribuzione		Distribuição	
	Orientation		Schwenken		Slewing		Orientación		Rotazione		Rotação	
	Conforme aux directives CEE sur le niveau acoustique		Gemäss EWG-Richtlinien für den Schall-Leistungspegel		In compliance with the EEC Instructions on noise level		Conforme con las directivas CEE sobre el nivel acustico		Conforme alle direttive CEE sul livello acustico		Conforme as directivas CEE sobre o nível acústico	
	Nous consulter		Auf Anfrage		Consult us		Consultarnos		Consultateci		Consultar-nos	

 Document commercial non contractuel. Pour toute information technique se référer à la notice correspondante

Unverbindliches Vertriebsdokument. Für technische Informationen, siehe die entsprechenden Anweisungen.

This commercial document is not legally binding. For any technical information, please refer to the corresponding instructions.

Documento comercial non contractuel. Para cualquier información técnica, ver la noticia correspondiente.

Documento commerciale non vincolante, per tutte le informazioni tecniche fare riferimento al catalogo istruzioni

Documento comercial não contratual. Para qualquer informação técnica complementar consultar as respectivas instruções