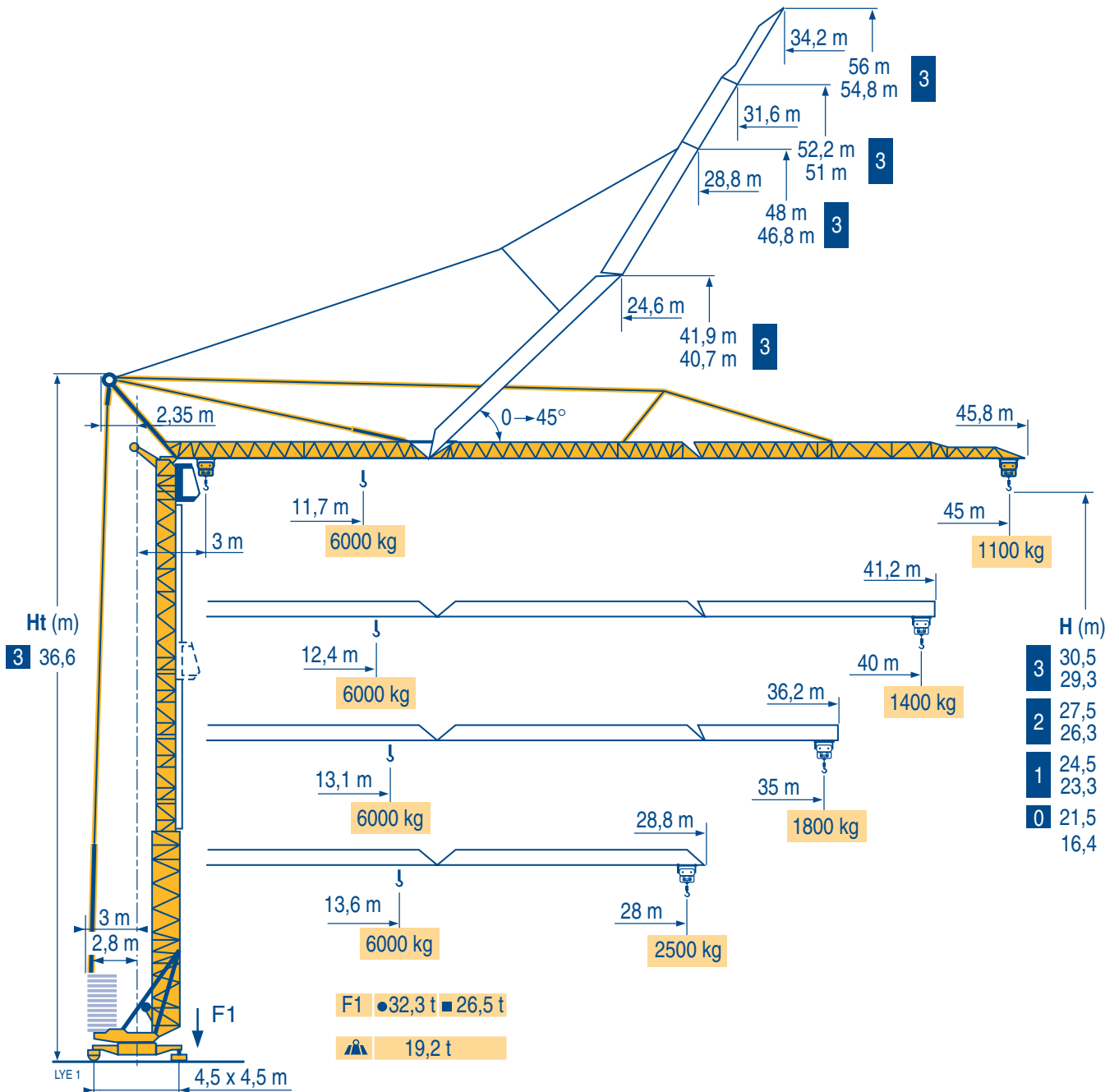

















# GTMR 346 B





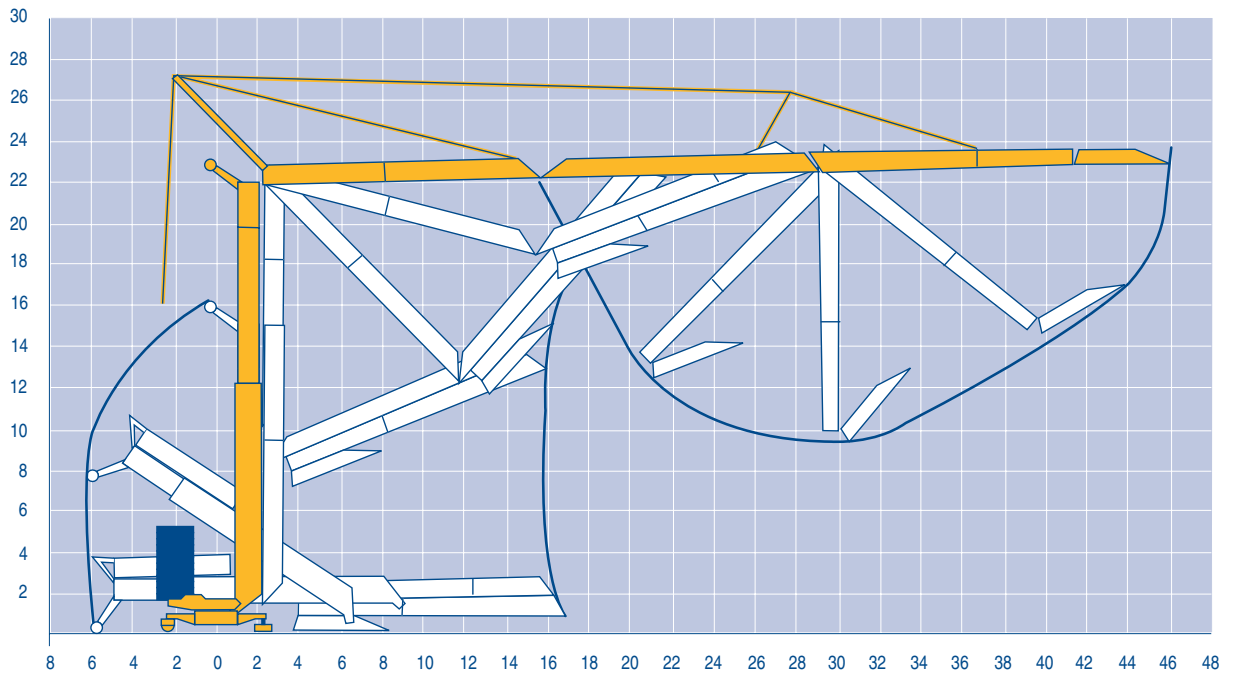
Mécanismes  
Antriebe  
Mechanisms  
Mecanismos  
Meccanismi  
Mecanismos

LVE 1

								ch - PS hp	kW	
										
	20 LVF 15	m/min	5,5	27,5	55	2,7	13,7	27,5	20	15
		Kg	3000	3000	1500	6000	6000	3000		
	5 D3 V4	m/min	15 - 30 - 58						5,5	4
	RCV 51	tr/min U/min rpm	0 → 0,8						6	4,4
 R ≥ 8 m	TDV 324	m/min	25						2 x 4	2 x 3
	TB 124	m/min	25						2 x 4	2 x 3
CEI 38		 IEC 38	 KVA							
400 V (+6% -10%) 50 Hz			30 kVA			2000/14				

Montage  
Montage  
Erection  
Montaje  
Montaggio  
Montagem

LVE 1



GTMR 346 B

**POTAIN** 



**F**

Levage  
Distribution  
Orientation  
Translation

Conforme aux directives CEE sur le niveau acoustique

**D**

Heben  
Katzfahren  
Schwenken  
Kranfahren

Gemäss EWG-Richtlinien für den Schall-Leistungspegel

**GB**

Hoisting  
Trolleying  
Slewing  
Travelling

In compliance with the EEC Instructions on noise level

**E**

Elevación  
Distribución  
Orientación  
Traslación

Conforme con las directivas CEE sobre el nivel acústico

**I**

Sollevamento  
Distribuzione  
Rotazione  
Traslazione

Conforme alle direttive CEE sul livello acustico

**P**

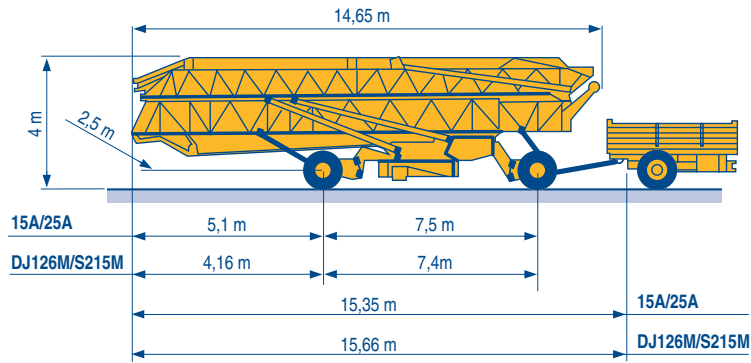
Elevação  
Distribuição  
Rotação  
Translação

Conforme as directivas CEE sobre o nível acústico

Transport  
 Transport  
 Transport  
 Transporte  
 Trasporto  
 Transporte

DJ126M/S215M

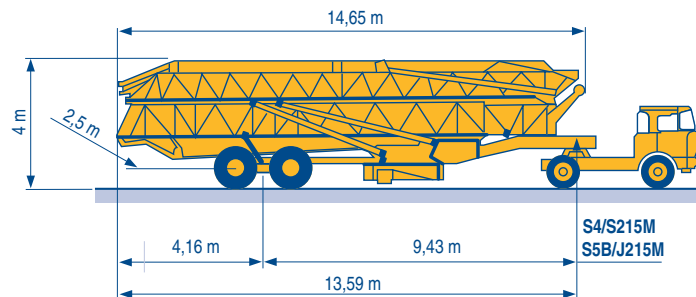
15A/25A



LYE 1

S4/S215M

S5B/J215M



Document commercial non contractuel. Pour toute information technique se référer à la notice correspondante

Unverbindliches Vertriebsdokument. Für technische Informationen, siehe die entsprechenden Anweisungen.

This commercial document is not legally binding. For any technical information, please refer to the corresponding instructions.

Documento commercial non contractuel. Para cualquier información técnica, ver la noticia correspondiente.

Documento commerciale non vincolante, per tutte le informazioni tecniche fare riferimento al catalogo istruzioni

Documento comercial não contratual. Para qualquer informação técnica complementar consultar as respectivas instruções

**Manitowoc**  
 Crane CARE

**POTAIN**   
 Manitowoc Crane Group



**Americas**  
 Tel: +1 920 683 6322  
 Tel: +1 717 597 8121

**Europe - Middle East - Africa**  
 Tel : +(33) 4 72 81 50 00  
 Tel : +(44) 191 565 6281

**Asia - Pacific**  
 Tel: +(65) 6861 7133  
 Fax: +(65) 6862 4142

www.manitowoccrane.com

18, rue de Charbonnières - B.P.173  
 69132 ECULLY Cedex - France

Tél. : (33) 4 72 18 20 20  
 Fax. : (33) 4 72 18 20 00  
 www.manitowoccrane.com www.potain.com

**GTMR 346 B**

Réf. 2003 48 LYE 1

Copyright.Reproduction interdite © POTAIN 2003

Réalisation HeadLines