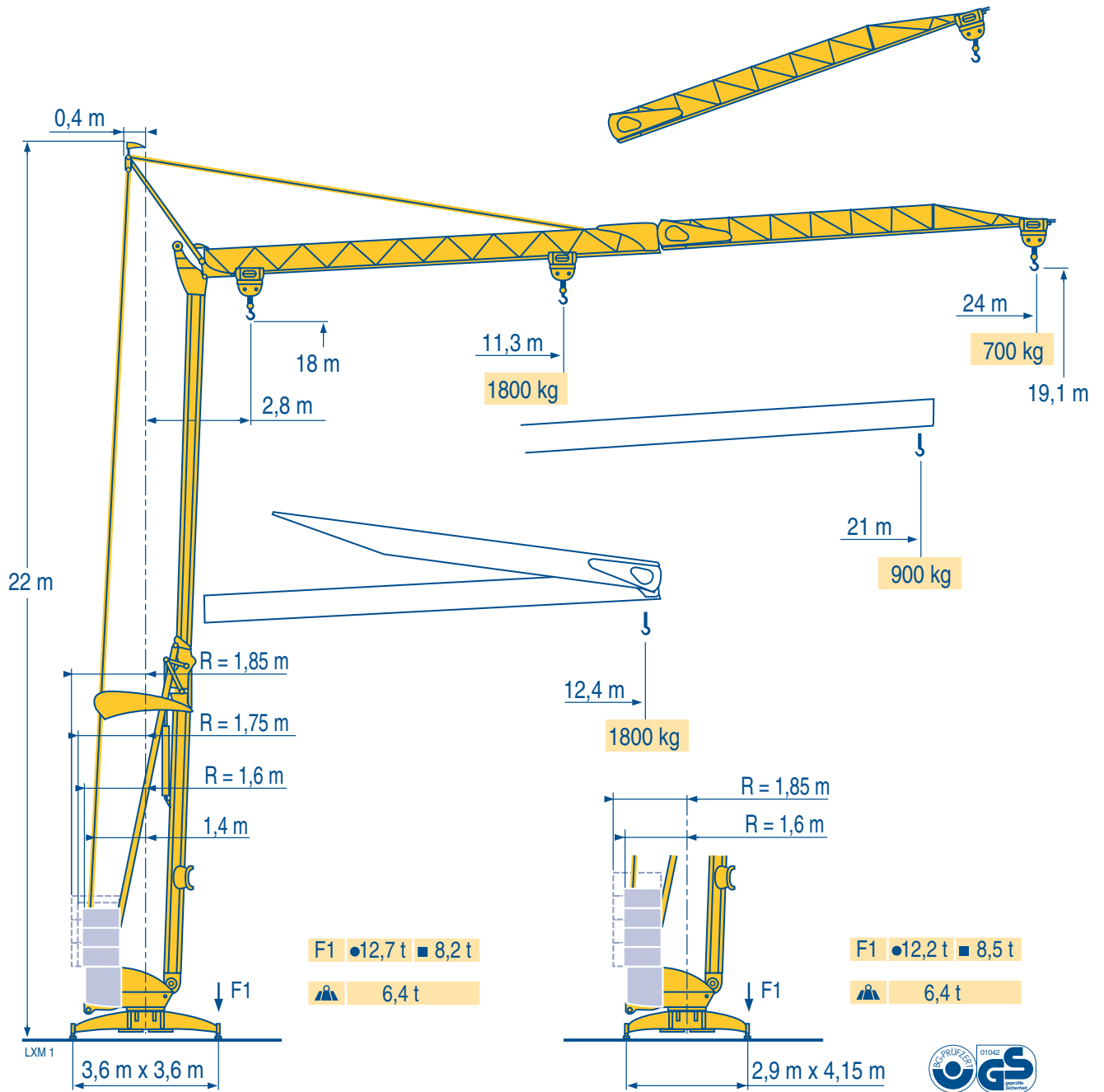
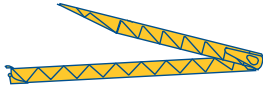


Igo 18

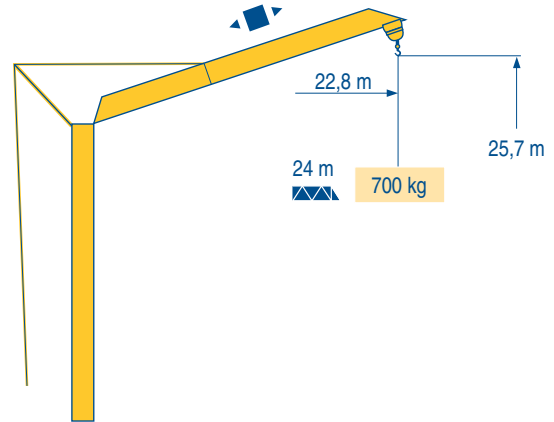
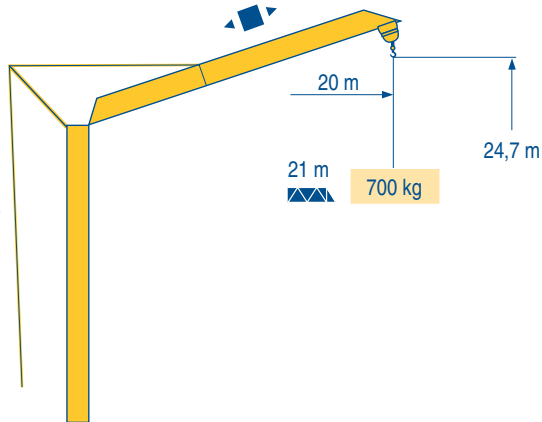


Courbes de charges
Lastkurven
Load diagrams
Curvas de cargas
Curve di carico
Curva de cargas



24 m	2,8	▶	12,4	m	11,3	12	13	14	15	16	17	18	19	20	21	22	23	24	m
	1800			kg	1800	1660	1505	1375	1260	1165	1080	1005	940	880	830	780	740	700	kg
21 m	2,8	▶	12,4	m	12	13	14	15	16	17	18	19	20	21	m				
	1800			kg	1800	1630	1485	1365	1260	1170	1090	1020	960	900	kg				

Fèche relevée
Ausleger in Steilstellung
Luffing jib
Flecha izada
Braccio impennato
Lança inclinada



Igo 18





-
-
-
-

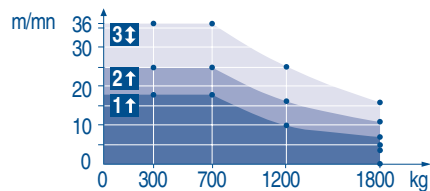
F Chariot distributeur Réactions en service Réactions hors service A vide sans lest (ni train de transport) avec fèche et hauteur maximum.	D Verfahrbare Laufkatze Reaktionskräfte in Betrieb Reaktionskräfte außer Betrieb Ohne Last, Ballast (und Transportachse), mit Maximalausleger und Maximalhöhe.	GB Traversing trolley Reactions in service Reactions out of service Without load, ballast (or transport axes), with maximum jib and maximum height.	E Carro distribuidor Reacciones en servicio Reacciones fuera de servicio Sin carga, sin lastre, (ni tren de transporte), flecha y altura máxima.	I Carrellino distributore Reazioni in servizio Reazioni fuori servizio A vuoto, senza zavorra (ne assali di trasporto) con braccio massimo e altezza massima.	P Carro distribuidor Reacções em serviço Reacções fora de serviço Sem carga (nem trem de transporte)- sem lastro com lança e altura máximas.
---	---	--	---	--	---

Mécanismes
Antriebe
Mechanisms
Mecanismos
Meccanismi
Mecanismos

LXM 1

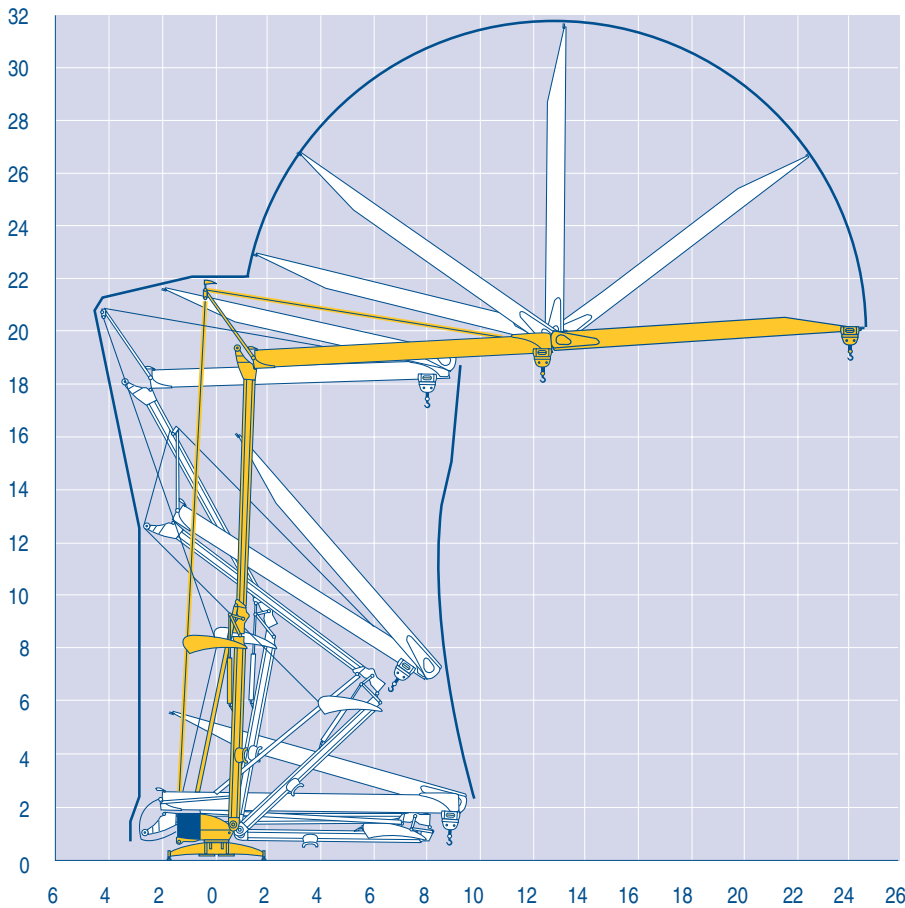
				🐢		🐌		🐕		ch - PS hp	kW
⬆️ ⬆️	8 LVF 9 Optima	230 V $\overline{//}$ 20 A 1	m/min	↑ 3,5 ↓ 3,5	↑ 7 ↓ 16	↑ 18 ↓ 36			3,3	2,4	
			kg	1800	1800	700					
		230 V $\overline{//}$ 32 A 2	m/min	↑ 3,5 ↓ 3,5	↑ 11 ↓ 16	↑ 25 ↓ 36			5,2	3,8	
			kg	1800	1800	700					
		400 V 3	m/min	↓ 3,5	↓ 16	↓ 36			7,5	5,5	
			kg	1800	1800	700					
⬅️ ➡️	1 DVF 4	-	m/min	14 - 28					1,5	1,1	
🌀	RVF 20	-	tr/min U/min rpm	0 → 1					1,5	1,1	
CEI 38  IEC 38				kVA							
230 V(+6% -10%) 50 Hz $\overline{//}$ 400 V(+6% -10%) 50 Hz				230 V 20 A : 4,6 kVA 230 V 32 A : 7,4 kVA 400 V : 11 kVA				2000/14			

8 LVF 9
Optima

































Montage
Montage
Erection
Montaje
Montaggio
Montagem

LXM 1



Igo 18

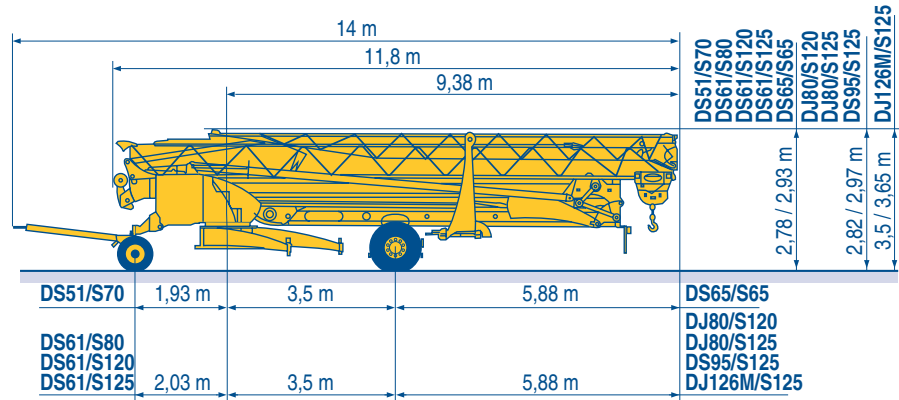
POTAIN 

F	D	GB	E	I	P
 Levage	 Heben	 Hoisting	 Elevación	 Sollevamento	 Elevação
 Distribution	 Katzfahren	 Trolleying	 Distribución	 Distribuzione	 Distribuição
 Orientation	 Schwenken	 Slewing	 Orientación	 Rotazione	 Rotação
 50 Hz Monophasé	 50 Hz Einphasige	 50 Hz Single phase	 50 Hz Monofasica	 50 Hz Monofase	 50 Hz monofásica
 Conforme aux directives CEE sur le niveau acoustique	 Gemäss EWG-Richtlinien für den Schall-Leistungspegel	 In compliance with the EEC Instructions on noise level	 Conforme con las directivas CEE sobre el nivel acustico	 Conforme alle direttive CEE sul livello acustico	 Conforme as directivas CEE sobre o nível acústico

Transport
 Transport
 Transport
 Transporte
 Trasporto
 Transporte

LXM 1

- DS51/S70 ○
- DS61/S80 ○
- DS61/S120 ○
- DS61/S125
- DS65/S65
- DJ80/S120 ○
- DJ80/S125
- DS95/S125
- DJ126M/S125



F
Chantier

D
Baustelle

GB
Site

E
Obra

I
Cantiere

P
Estaleiro



Document commercial non contractuel. Pour toute information technique se référer à la notice correspondante

Unverbindliches Vertriebsdokument. Für technische Informationen, siehe die entsprechenden Anweisungen.

This commercial document is not legally binding. For any technical information, please refer to the corresponding instructions.

Documento comercial no contractual. Para cualquier información técnica, ver la noticia correspondiente.

Documento commerciale non vincolante, per tutte le informazioni tecniche fare riferimento al catalogo istruzioni

Documento comercial não contractual. Para qualquer informação técnica complementar consultar as respectivas instruções



Americas

Tel: +1 920 683 6322
 Tel: +1 717 597 8121

Europe - Middle East - Africa

Tel : +(33) 4 72 81 50 00
 Tel : +(44) 191 565 6281

Asia - Pacific

Tel: +(65) 6861 7133
 Fax: +(65) 6862 4142

www.manitowoccrane.com

**18, rue de Charbonnières - B.P.173
 69132 ECULLY Cedex - France**

Tél. : (33) 4 72 18 20 20
 Fax. : (33) 4 72 18 20 00
 www.manitowoccrane.com www.potain.com

Igo 18

Réf. 2003 48 LXM 1

Copyright.Reproduction interdite © POTAIN 2003

Réalisation HeadLines