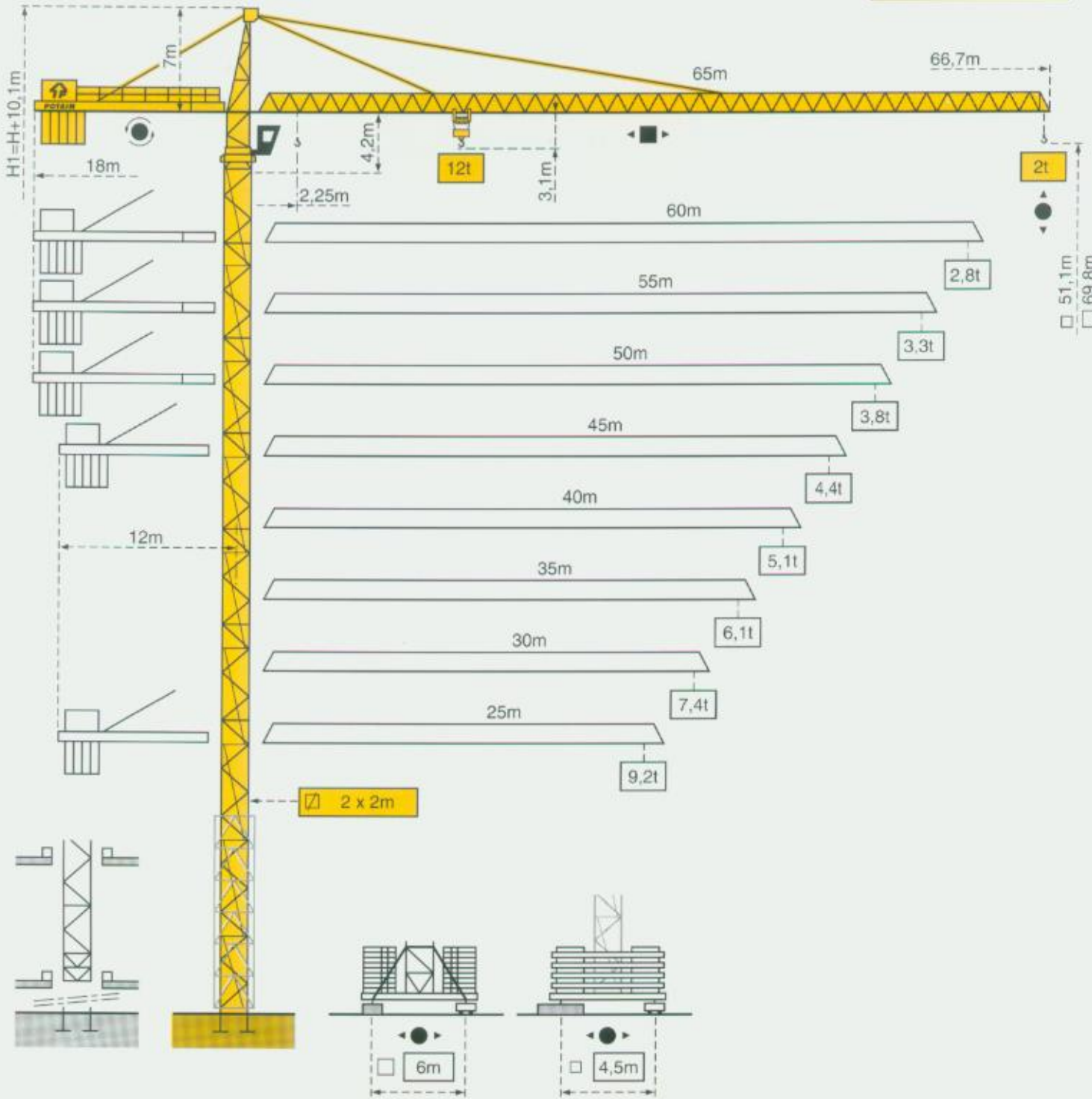


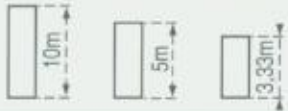
TOPKIT MD 250
"matic"



TOPKIT MD 250 "matic"

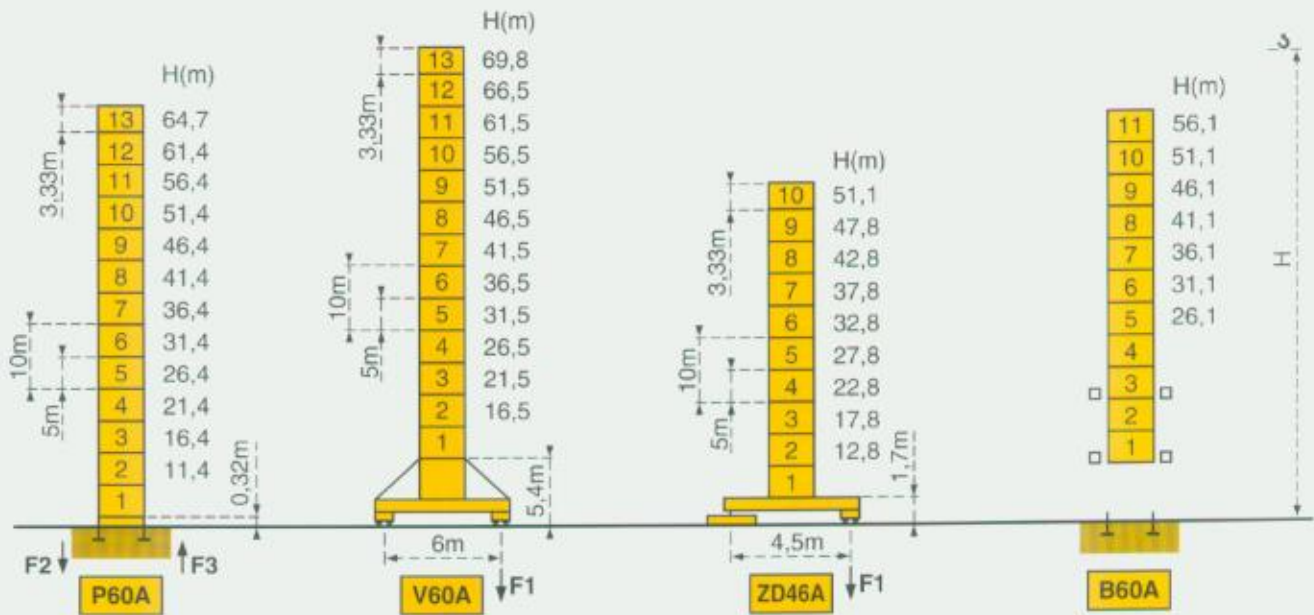


Mats - Maste - Masts - Mástil - Torre



2 m
MD 250 J12

Flèche - Ausleger - Jib
Flecha - Braccio
25m ⇒ 65m



F2	● 158t	■ 216t
F3	● 106t	■ 170t

F1	● 105t	■ 141t
----	--------	--------

F1	● 93t	■ 98t
----	-------	-------

⊕	73t
---	-----

⊕	86t
---	-----

⊕	78t
---	-----

Nous consulter
Auf Anfrage
Consult us
Consultarnos
Consultateci

F = Réactions - Eckdrücke - Reactions - Reacciones - Reazioni

Flèche
Ausleger
Jib
Flecha
Braccio

Courbes de charges - Lastkurven - Load diagrams - Curvas de cargas - Curve di carico

	17,1	20	22	25	27	30	32	35	37	40	42	45	47	50	52	55	57	60	62	65	m
65m	12	10	8,9	7,7	7	6,1	5,6	5	4,7	4,2	3,9	3,6	3,3	3	2,87	2,63	2,49	2,29	2,16	2	t
	19,1	20	22	25	27	30	32	35	37	40	42	45	47	50	52	55	57	60			m
60m	12	11,4	10,2	8,8	8	7	6,5	5,8	5,4	4,9	4,6	4,2	4	3,6	3,4	3,2	3	2,8			t
	19,5	20	22	25	27	30	32	35	37	40	42	45	47	50	52	55					m
55m	12	11,7	10,5	9	8,2	7,3	6,7	6	5,6	5,1	4,8	4,3	4,1	3,8	3,6	3,3					t
	19,6	20	22	25	27	30	32	35	37	40	42	45	47	50							m
50m	12	11,8	10,6	9,1	8,3	7,3	6,8	6	5,6	5,1	4,8	4,4	4,1	3,8							t
	19,6	20	22	25	27	30	32	35	37	40	42	45									m
45m	12	11,8	10,6	9,1	8,3	7,3	6,8	6	5,6	5,1	4,8	4,4									t
	19,6	20	22	25	27	30	32	35	37	40											m
40m	12	11,8	10,6	9,1	8,3	7,3	6,8	6	5,6	5,1											t
	19,8	20	22	25	27	30	32	35													m
35m	12	11,9	10,6	9,2	8,4	7,4	6,8	6,1													t
	19,9	20	22	25	27	30															m
30m	12	11,9	10,7	9,2	8,4	7,4															t
	19,9	20	22	25																	m
25m	12	11,9	10,7	9,2																	t

Ancrages - Verankerungen - Anchorages - Anclaje - Ancoraggio



■ En service
● Hors service

■ In Betrieb
● Ausser Betrieb

■ In service
● Out of service

■ En servicio
● Fuera de servicio

■ In servizio
● Fuori servizio

⊗ A vide sans lest avec flèche et hauteur maximum.










⊗ Ohne Last und Ballast mit Maximalausleger und Maximalhöhe.

⊗ Without load and ballast with longest jib and maximum height.

⊗ Sin carga, sin lastre con flecha y altura máximas.

⊗ A vuoto senza zavorra e con braccio massimo e altezza massima.




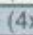

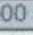
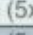
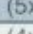
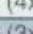
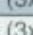
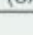
Mécanismes - Antriebe - Mechanisms - Mecanismos - Meccanismi

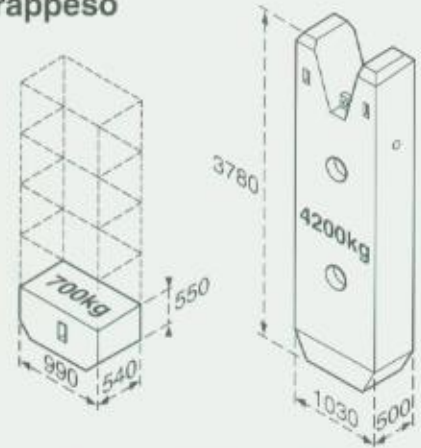
				m/min	t		ch -PS hp	kW	
Levage Heben Hoisting Elevación Sollevamento		 12t	55	1	0 → 16	12	344m	55	40,5
			LTV	2	32	6			
			30	3	64	3			
			80	1	0 → 24	12	601m	80	60
			LTV	2	48	6			
			30	3	96	3			
Distribution Katzfahren Trolleying Distribución Distribuzione			6 D3 V4	10-40-80			6	4,4	
Orientation Schwenken Slewing Orientación Rotazione			RCV 185	0 → 0,8 tr/min rpm			2x9	2x6,6	
Translation Kranfahren Travelling Traslación Traslazione	 ZD 46 A	RT 443 A1 2V	15 - 30			4x5	4x3,7		
		 V 60 A R ≥ 13m	RT 544 A1 2V	13,5 - 27			4x7	4x5,2	
			TCV 649 ARC H ≤ 41,5m	10 - 50			4x6,8	4x5	
Réseau - Netzstrom - Mains supply - Red - Rete elettrica							370V-400V.50Hz		
Puissance électrique nécessaire - Anschlusswert - Necessary electric power Potencia eléctrica necesaria - Potenza elettrica necessaria							55 LTV : 80KVA 80 LTV : 105KVA		
Groupe électrogène - Stromaggregat - Generator set - Grupo electrogeno - Gruppo elettrogeno							*		

*Nous consulter - Auf Anfrage - Consult us - Consultarnos-Consultateci

Conforme à la directive CEE 84/534 sur le niveau acoustique - Gemäss EWG-Richtlinie 84/534 Schall- Leistungspegel
 In compliance with the EEC 84/534 instruction on noise level - Conforme con la direttiva CEE 84/534 sobre el nivel acustico
 Conforme colla direttiva CEE 84/534 sul livello acustico

Lest de contre-flèche - Gegenauslegerballast - Counter-jib ballast
Lastre de contra flecha - Contrappeso

			(t)
65m	18m		18 900 = (4x4200)+(3x700)
60m	18m		18 200 = (4x4200)+(2x700)
55m	18m		15 400 = (3x4200)+(4x700)
50m	18m		12 600 = (3x4200)
45m	12m		24 500 = (5x4200)+(5x700)
40m	12m		22 400 = (5x4200)+(2x700)
35m	12m		19 600 = (4x4200)+(4x700)
30m	12m		15 400 = (3x4200)+(4x700)
25m	12m		13 300 = (3x4200)+(1x700)



Lest de base - Grundballast - Base ballast - Lastre de base - Zavorra di base

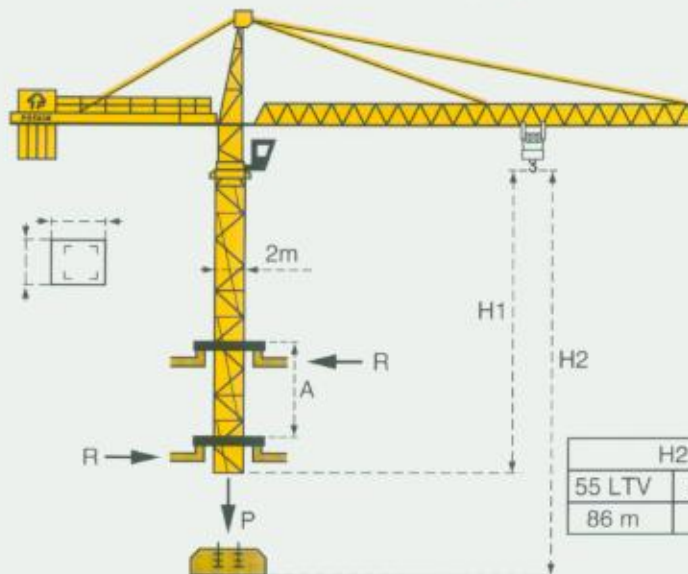
H(m)		(t)	H(m)		(t)
69,8		108			
66,5		96			
61,5		72			
56,5		48	51,1		75
51,5		36	47,8		75
46,5		36	42,8		75
41,5		36	37,8		75
36,5		36	32,8		75
31,5		36	27,8		75
26,5		36	22,8		75
21,5		36	17,8		75
16,5		36	12,8		75
V 60 A - ● -			ZD 46 A - ● -		
□ 2m					

**ZD
46
A**



Télescopage sur dalles - Kletterkrane im Gebäude - Climbing crane
Telescopage gruas trepadoras - Gru in cavedio

B 60 A



H2	
55 LTV	80 LTV
86 m	150 m

Nous consulter
 Auf Anfrage
 Consult us
 Consultarnos
 Consultateci

- | | | | | |
|---------------------------------|-------------------------------|-----------------------------|---------------------------------|--------------------------------|
| A Distance entre cadres | A Abstand zwischen den Rahmen | A Distance between collars | A Distancia entre marcos | A Distanza tra telai |
| H1 Hauteur grue | H1 Kranhöhe | H1 Crane height | H1 Altura grúa | H1 Altezza gru |
| P Poids de la grue (en service) | P Krangewicht (in Betrieb) | P Crane weight (in service) | P Peso de la grúa (en servicio) | P Peso della gru (in servizio) |
| R Réaction horizontale | R Horizontalkräfte | R Horizontal reaction | R Reaccion horizontal | R Reazione orizzontale |