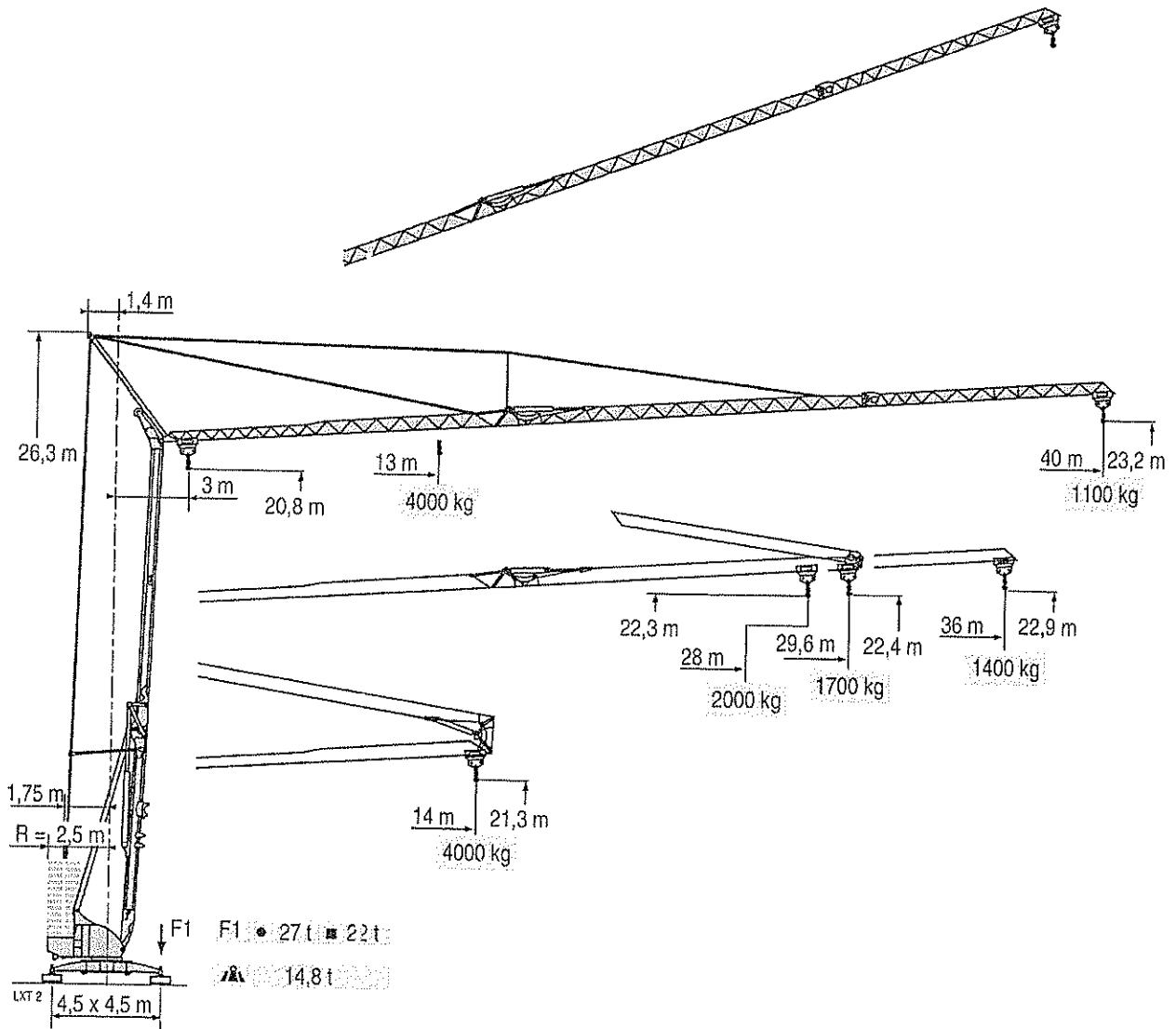


# POTAIN

## Igo 50



**antowoc**  
Crane Group

Above. Beyond. Everywhere.™

CE FEM 1.001-A3

Courbes de charges

Lastkurven

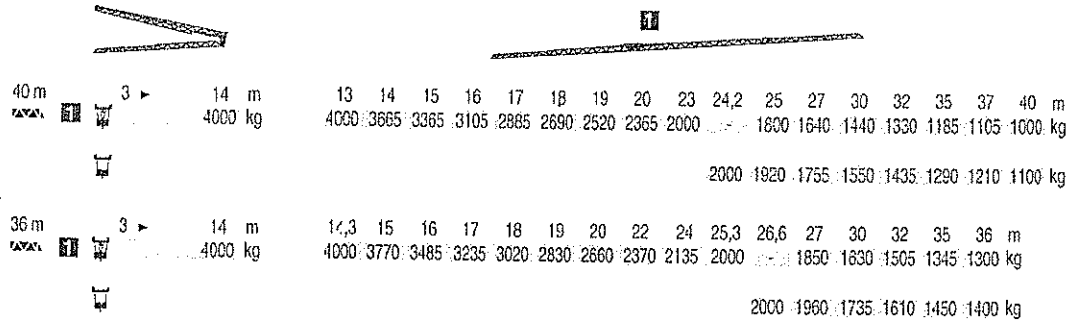
Load diagrams

Curvas de cargas

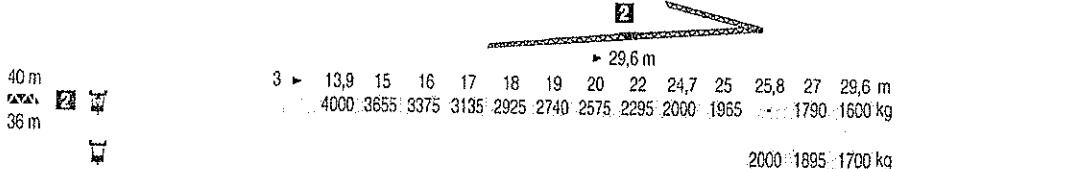
Curve di carico

Curva de cargas

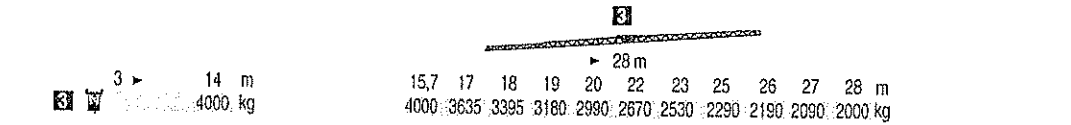
UT 1



2



3



Flèche relevée

Ausleger in Steilstellung

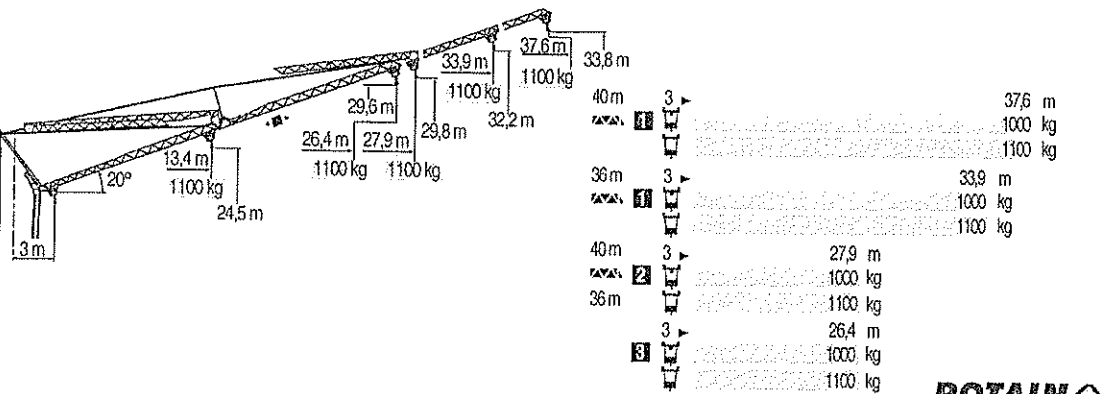
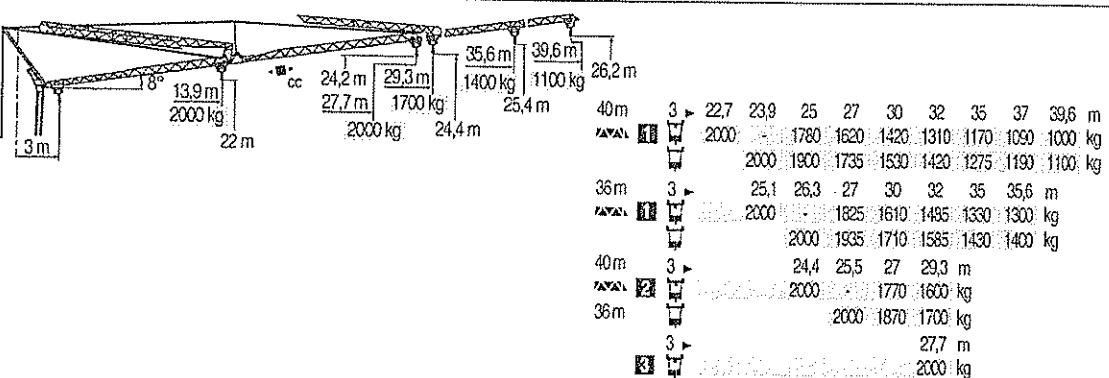
Luffing jib

Flecha izada

Braccio impennato

Lança inclinada

UT 2



Igo 50

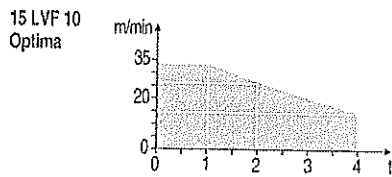
POTAIN

	Chariot distributeur		Verfahrbare Laufkatze		Traversing trolley		Carro distribuidor		Carrellino distributore		Carro distribuidor
	Chariot distributeur et courbes de charges		Verfahrbare Laufkatze und Lastkurven		Traversing trolley and load diagrams		Carro distribuidor y curvas de cargas		Carrellino distributore e curve di carico		Carro distribuidor e curva de cargas
	Réactions en service		Reaktionskräfte in Betrieb		Reactions in service		Reacciones en servicio		Reazioni in servizio		Reacções em serviço
	Réactions hors service		Reaktionskräfte außer Betrieb		Reactions out of service		Reacciones fuera de servicio		Reazioni fuori servizio		Reacções fora de serviço
	A vide sans last (ni train de transport) avec flèche et hauteur maximum.		Ohne Last, Ballast (und Transportachse), mit Maximalausleger und Maximalhöhe.		Without load, ballast (or transport axis), with maximum jib and maximum height.		Sin carga, sin lastre, (ni tren de transporte), flecha y altura máxima.		A vuoto, senza zavorra (ne assali di trasporto) con braccio massimo e altezza massima.		Sem carga (nem trem de transporte), sem lastro com lança o altura máximas.

Mécanismes  
Antriebe  
Mechanisms  
Mecanismos  
Meccanismi  
Mecanismos

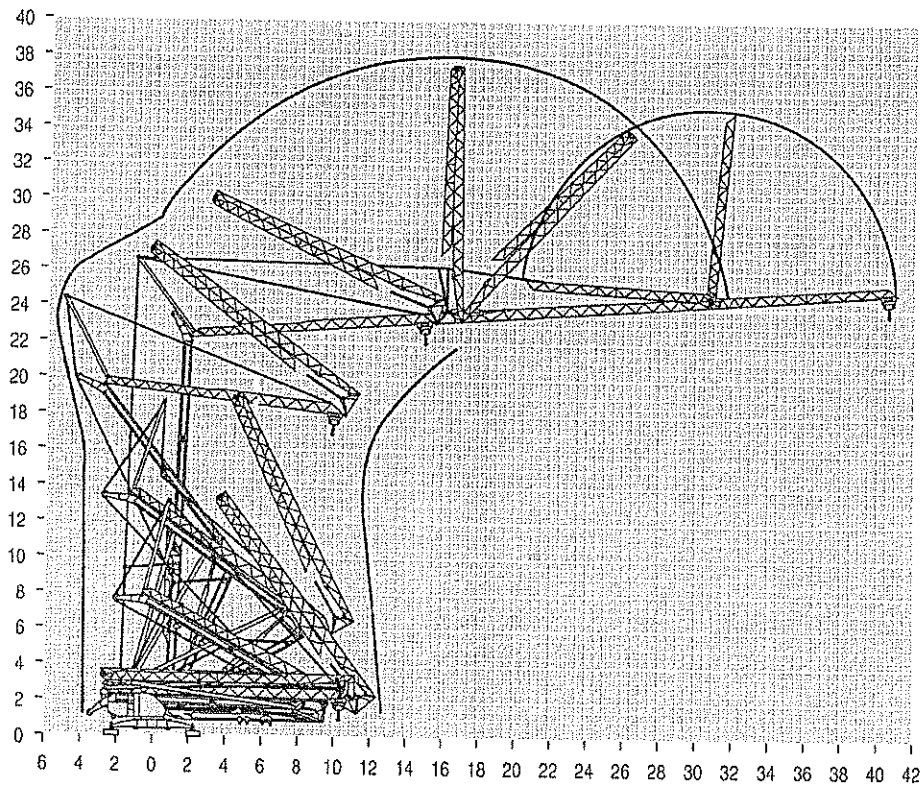
LX12

													ch - PS hp	kW
	15 LVF 10 Optima	m/min	3,6	18	30	49	66						15	11
		kg	2000	2000	2000	1100	500							
	3 DVF5	m/min	3,6	18	30	54	66	1,8	8,9	15	27	33	3	2,2
		kg	2000	2000	2000	1000	500	4000	4000	4000	2000	1000		
	RVF+ 51	tr/min U/min rpm	19 · 45 (0 → 1000 kg) - 19 · 41 (1000 → 4000 kg)										5,5	4
			0 → 0,8											
CEI 38			IEC 38											
400 V (+6% -10%) 50 Hz			15 LVF 10 : 23 kVA					2000/14						



Montage  
Montage  
Erection  
Montaje  
Montaggio  
Montagem

LX14

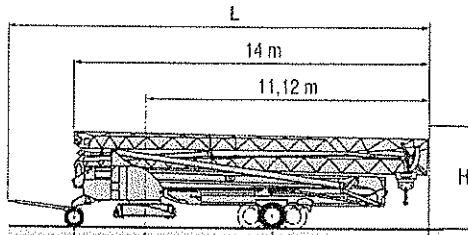


Igo 50

POTAIN

Lavage	Heben	Hoisting	Elevación	Sollevamento	Elevação
Distribution	Katzfahren	Trolleying	Distribución	Distribuzione	Distribuição
Orientation	Schwenken	Stewing	Orientación	Rotazione	Flotação
	Gemäss EWG-Richtlinien für den Schall-Leistungspegel	In compliance with the EEC Instructions on noise level	Conforme con las directivas CEE sobre el nivel acústico	Conforme alla direttiva CEE sul livello acustico	Conforme as directivas CEE sobre o nível acústico

Transport DJ100/S120 ○  
 Transport DJ105/S125  
 Transporte DJ126MS125  
 Trasporto DJ126MS215M  
 Transporte

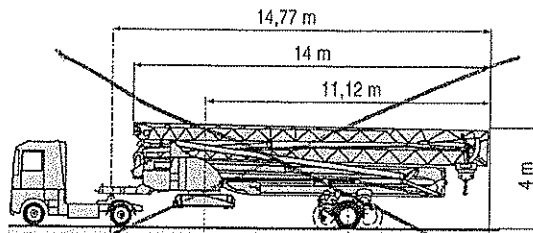


				H	L
DJ100/S120	2,75 m	5,25 m	5,87 m	3,57 m	16,39 m
DJ105/S125	2,75 m	5,25 m	5,87 m	3,57 m	16,39 m
DJ126MS125	2,75 m	5,25 m	5,87 m	3,57 m	16,96 m
DJ126MS215M	3,55 m	4,93 m	6,19 m	4 m	17,75 m

SL122/J215M

SL121/J135

SL121/S215M



SL122/J215M	3,65 m	4,93 m	6,19 m
SL121/J135	3,65 m	5,88 m	5,24 m
SL121/S215M	3,65 m	4,93 m	6,19 m



Chanier



Baustelle



Site



Obra



Cantiere



Estaleiro



Document commercial non contractuel. Pour toute information technique se référer à la notice correspondante

Unverbindliches Vertriebsdokument. Für technische Informationen, siehe die entsprechenden Anweisungen.

This commercial document is not legally binding. For any technical information, please refer to the corresponding instructions.

Documento comercial no contractuel. Para cualquier información técnica, ver la noticia correspondiente.

Documento commerciale non vincolante, per tutte le informazioni tecniche fare riferimento al catalogo istruzioni

Documento comercial não contractuel. Para qualquer informação técnica complementar consultar as respectivas instruções

**Manitowoc**  
Crane CARE

**POTAIN**  
Manitowoc Crane Group



18, rue de Charbonnières - B.P.173  
69132 ECULLY Cedex - France

Tel. : (33) 4 72 18 20 20  
Fax. : (33) 4 72 18 20 00  
www.manitowoccrane.com www.potain.com

**Americas**  
Tel: +1 920 693 6322  
Tel: +1 717 597 8121

**Europe - Middle East - Africa**  
Tel : +(33) 4 72 81 50 00  
Tel : +(44) 191 865 6281

**Asia - Pacific**  
Tel: +(65) 6861 7133  
Fax: +(65) 6862 4142

www.manitowoccrane.com

**Igo 50**

Réf. 2003 48 LXT 4

Copyright.Reproduction interdite © POTAIN 2003

Réalisation HeadLines